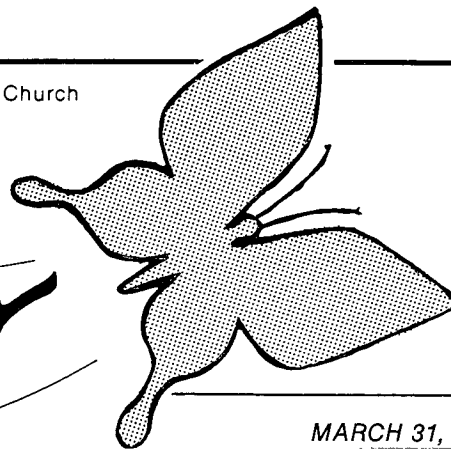


The Flyer



VOLUME II, Special Issue

MARCH 31, 1980

WHAT DO WOMEN DELEGATES WANT AT GENERAL CONFERENCE? DIVISION, COMMISSION PLAN WOMEN'S ORIENTATION, CENTER

"What do you need to know for General Conference?" the woman delegate was asked.

"Major issues concerning women," she wrote in response. "Explain politically what needs to be done, not just generally. . . . the process for bringing Leontine Kelly, Marjorie Matthews and any other potential bishop's candidates to the forefront. . . . how to elect a woman head of a legislative committee."

Throughout the church members are gearing up for April's General Conference, and with the help of feedback from women delegates such as the one above, the Women's Division (WD) and the General Commission on the Status and Role of Women (GCSRW), too, are making plans to serve.

Questionnaires sent to the 230 women delegates are bringing back questions and concerns which the GCSRW and WD are then striving to address.

Many women delegates, particularly first-timers, are anxious to learn the strategies and acquire the information needed to be good delegates.

"At this point I do not have specific questions," one woman delegate wrote. "I'll be looking for all the information and help I can get."

"I'm a new delegate," wrote another, "and would find helpful information and suggestions not printed in the rules book, etc."



Eight of the 10-member GCSRW team who will provide resources and observe at the General Conference meeting. (Front row, l. to r.) Thelma Stevens, Lynne Josselyn, Rose Thomason (Second row, l. to r.) Sharon Howell, Evelyn Strong, Ellie Amico, Mary Hurmence (Back) George Walters. Not pictured—Owsley Spiller, Liz Lopez Spence.

WOMEN DELEGATES' ORIENTATION

Tuesday, April 15, 1980

8:30 a.m. coffee, donuts

9 a.m. to noon—sessions

noon to 1 p.m. box lunch

(by reservation only)

INDIANAPOLIS CONVENTION CENTER

Rooms 203-204

Those women who have been to General Conference before are particularly eager to discuss electing women as chairpersons of legislative committees and to the Judicial Council and as Bishops.

Writes one woman, "My concern involves a belief that the United Methodist Church must expand its recognition and appreciation of the uniqueness of women in their service and commitment to the Christian Gospel and the Church. We cannot continue to be satisfied with a form of 'tokenism.'"

Other concerns include:

"I want to know what to expect as far as give and take, trade-offs, church politics or whatever you want to call it."

"I am interested in hearing of issues concerning ethnic minority women. If there are well-thought out positions on abortion and gay rights, I would hope that these subjects would be pursued."

To address these and other concerns, an **ORIENTATION SESSION** for women delegates will be held Tuesday, April 15, from 8:30 a.m. to noon in rooms 203-204 of the Indianapolis Convention Center, site of the 1980 General Conference.

The Women's Division and the GCSRW are co-sponsoring the orientation which is designed to enable effective participation, leadership and functioning of women delegates by:

- providing skills, techniques and strategies for impacting issues and legislation
- identifying pertinent issues of concern for women
- creating opportunities for dialogue, networking, visibility and mutual support among women.

The orientation session will begin the networking process, teach needed legislative skills, identify issues and give women delegates an opportunity to meet other women, particularly those who will serve on the same legislative

(cont. on pg.3)

OPTIONS FOR ACTION

(From the Minutes of the Annual Conference Commissions)

KANSAS EAST—Completed a survey of 400 clergy families in the Kansas East/Kansas West annual conferences (with an unusually high response rate of 40 per cent). Questionnaires were customized for pastor, pastor's spouse and family members to get more comprehensive perspective. Computerized results are being analyzed by the CSRW leadership. The project was done in consultation with sociology Professor Tex Sample, St. Paul's School of Theology in Kansas City. Samples indicate the data will be useful to Kansas clergy families and others as well. An article for publication in the church press is projected. Costs to date of \$1,000 include postage, printing and computer time. A brief summary report will be available in late April. To get a copy send a self-addressed, stamped envelope to Dee Ann Mezger, 2033 N. 42nd St., Kansas City, KS 66104 (Ed. note: small contributions to help defray expenses might be appreciated.)

SOUTHERN NEW JERSEY—"Women's Journey," a weekend Conference sponsored by the CSRW in March, will focus on non-sexist and non-racist worship, handling conflict creatively, church politics for women, money management, Bible study and consciousness raising for older persons.

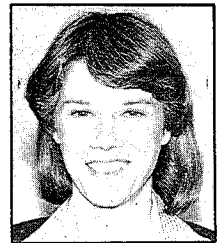
GEORGIA—Focusing on women in pilgrimage, the CSRW held a "Day on Women's Concerns," with workshops on single women, estate planning, health, the media, homemaking, and the Bible. Resource women included an attorney, a marketing consultant, a legislator, a college president, a pastor and a credit manager.

NORTHERN ILLINOIS—In conjunction with the Central Illinois Conference the CSRW sponsored an ERA Sunday in February. The date was designated ERA Sunday by the Conference Council on Ministries on the recommendation of the Board of Church and Society, United Methodist Women, and the CSRW. Posters, pamphlets and a bullet insert for local church worship were provided and the CSRW helped with publication and mailing costs.

PACIFIC NORTHWEST—Thorough "Womanspeak Sunday Packet" mailed to each local church as a resource for the May 4 "Womanspeak Sunday." Packet includes information on how to make the event happen in the congregation, what form and content the Sunday might have, a sample order or worship, practical hints for delivering a first sermon, scripture commentaries, and a bibliography and resource list.

OVATIONS

To **SHARON BROWN CHRISTOPHER**, new District Superintendent for the Eastern District of the Wisconsin Conference. The fifth woman ever to serve as a United Methodist D.S. in the U.S., her June 8 appointment brings the current number of women District Superintendents to four. Christopher finishes four years as pastor of the Aldersgate UMC, Milwaukee, WI, in June. "The time is right in Wisconsin for a woman to be on the cabinet," Christopher said. "A woman's understanding and perspective are needed in light of the number of women becoming pastors. I bring not only a feminist perspective to the Annual Conference but a vision of the church as an inclusive community. I bring a vision of the ministry as a partnership of clergy and laity and a style of collegiality." Christopher was one of the four preachers at the 1979 Consultation of United Methodist Clergywomen.



BRITISH COUNCIL OF CHURCHES ENDORSES 'PARENT GOD'

The British Council of Churches is urging young people to address their prayers to "Parent God" instead of "Father God" and to confess to the sin of sexism, The Chicago Sun Times reported in a London Daily Telegraph story February 27.

In a book of prayers and hymns just published for the council, one prayer contains the repeated congregation response: "Parent God, fortify us—each of us made in your image." The book is intended for use by young people in most of the main denominations in Britain and Ireland.

Last month, the Sunday Telegraph revealed the Roman Catholic International Commission on English in the Liturgy had considered proposals that the word "men" be deleted from the Nicene Creed or substituted by the phrase "men and women."

PLEASE—If you have any unused, undistributed copies of the February 29, 1980 FLYER, we would like them returned to the General Commission on the Status and Role of Women offices, 1200 Davis St., Evanston, IL 60201. We have only 12 copies left for our files! Thanks.

THE FLYER, named after the Commission's butterfly symbol, is published as a communications link with Annual Conference Commissions. Items for possible insert should be sent—by the 15th of the month preceding publication—to THE FLYER, c/o the Commission office. No permission is needed to reprint; a credit line is requested. Annual Conference Commission members should send address changes to their chairpersons, not to the Commission office.

Next issue: April 30, 1980

Patricia Broughton, Ed.

SELECTED RESOURCES

The Biblical/Theological Task Force of the Commission on the Status and Role of Women is developing an annotated bibliography, including book reviews and other resources. Each issue of THE FLYER includes current listings from the bibliography. The two books at the top were reviewed by commission member Nelia Kimbrough.

BIBLICAL AFFIRMATIONS OF WOMEN. By Leonard Swidler. An easy-to-read, comprehensive volume available in paperback, containing a prologue on women in the ancient world and sections on feminine imagery of God, women in Hebrew-Jewish tradition, and woman in Christian tradition. The latter sections address the positive, ambivalent and negative elements toward women in the traditions. Each section also includes a summary. Swidler is a familiar author to women in the church. This volume draws upon extensive research, as well as other scholars, in striving to unravel the complexity of the Judeo-Christian traditions that often stand in strong opposition to Jesus' stance of equality for women.

THE POWER OF LANGUAGE AMONG THE PEOPLE OF GOD. Excellent resource document from the United Presbyterian Church looks at language with regard to reality, dominance, the feminist critique, and the life of the church. Extensive, 23-page bibliography on women, language and theology included as part of the 48-page document. Available from The Advisory Council on Discipleship and Worship, The United Presbyterian Church, 475 Riverside Drive, Room 1020, New York, NY 10027. Price \$1.

PAULI MURRAY. March 1980 "Ms." Magazine article looks at the life of priest/poet/lawyer/teacher/revolutionary/feminist/civil-rights activist North Carolinian Pauli Murray. This story of the nation's first black woman Episcopal priest testifies to the continuing double burden of discrimination faced by Black women.

THE FEMININE DIMENSION OF THE DIVINE. By Joan Chamberlain Engelsman. An indepth study of the patterns of repression of the feminine in Christian tradition, drawing upon Carl Jung's concept of the archetype. The author includes chapters on the feminine archetype, repression of the feminine, Hellenistic Goddesses, expression and repression of Sophia and the return of the repressed. The author points to the potential richness to be recovered in our religious life from the affirmation of the feminine aspects of God's identity. Volume available in paperback.

WHOLENESS IN WORSHIP. Newest book by Sharon and Thomas Neuffer Emswiler renames feminist worship as inclusive, "wholistic," worship. The importance of language, incorporating the body and children in worship, and healing are explored. Sample services with liturgies, scriptures, sermon ideas, and songs are included. The Harper and Row paperback is due in late May.

SELECTED FICTION: Tales I tell myself. A powerful, moving "confession" of a woman's journey through the "fictions" of her life, how she won her way with three: "victim, man-hating and womanspace." God's plan, as "inexhaustible mystery and journey into something new, the possibility of womanspace, which is, at last, space in me," is constantly revealed. An Occasional Paper (No. 31), available from the United Methodist Board of Higher Education and Ministry, P.O. Box 871, Nashville, TN 37202.

PLANNING FOR GENERAL CONFERENCE

(cont. from pg. 1)

committees. (The work of General Conference is distributed among ten legislative committees during the first week.)

Coffee and donuts served at 8:30 a.m. and box lunches between noon and 1 p.m. (by reservation only) will give women opportunities to share and to talk informally.

The work that begins at the orientation session will continue throughout the two-week General Conference at **THE WOMEN'S CENTER**, located in the South Ballroom (just off the ground floor lobby) of the Atkinson Hotel, one block from the convention center.

Facilitating the full involvement of women in all aspects of General Conference is the function of the women's center. It will be a supportive, healing and creative environment as well as a strategizing and legislative center. Women will find space for relaxing and recharging their energies, too.

Under the co-sponsorship of the WD and the GSCRW, the center will hopefully

- build a network to enhance the participation of women
- establish a supportive climate for women
- provide resources consistent with the philosophies of the two sponsoring organizations.

The center will be open throughout the conference, with special resourcing during meal and other break times and after each day's business is finished.

Posted at the center will be a calendar of events sponsored by the Women's Division and the GSCRW. It will include selected events of interest to women sponsored by other organizations. Some of the events expected to be scheduled include worship, delegates' meetings, and a National Women's Caucus-sponsored tea for women candidates for the episcopacy.

Among those working at the Women's Center and during the orientation session will be ten persons representing the GSCRW. Dubbed the "Indy Ten," the women and men will provide support and linkages for women, track legislation, monitor the inclusion of women, and support women in their participation.

CORRECTION—The last name of GSCRW consultant Lydia Savasten was inadvertently left off the identification line under her picture on page 5 of the February, 1980, FLYER.

COMMISSION TALENT SCOUT

TO APPLICANTS AND EMPLOYERS: To inquire about openings, applicants should write directly to the employer listed, not to the Commission. Employers submitting listings are asked to send information—including application deadline and salary range—to the Executive Secretariat, CSRW, 1200 Davis St., Evanston, IL 60201.

1. **DIRECTOR, RACIAL JUSTICE, DIVISION OF CHURCH AND SOCIETY, NATIONAL COUNCIL OF CHURCHES:** Ecumenical responsibilities, extensive travel in addressing racism in the church. Legislative monitoring, government consultation and advisement on civil rights issues from the standpoint of religion and the churches. Salary range: \$17,425-\$24,695. Deadline May 3. Contact with resume Robert J. Clooney, NCC Office of Personnel, Room 520, 475 Riverside Drive, New York, NY 10027.

2. **AMERICAN FRIENDS SERVICE COMMITTEE:** Various positions, including Executive Secretary, Middle East field director (manager for pre-school center program in the Gaza Strip), Central American catalyst/facilitator (in Guatemala City), and Thailand field director (Southeast Asia Refugee Program). Numerous positions in the U.S. also open. Contact the AFSC Personnel Office, 1501 Cherry St., Philadelphia, PA 19102. (215) 241-7105.

3. **STAFF WRITER, THE TEXAS METHODIST/UNITED METHODIST REPORTER:** News and feature writing, travel to church meetings. Newspaper experience preferred. Dallas location. Salary negotiable. Send resume, writing samples by March 28 to Spurgeon M. Dunnam III, Editor-General Manager, TM/UMR, P.O. Box 221076, Dallas, TX 76222.

4. **INTERNSHIP IN RELIGIOUS JOURNALISM FOR MINORITY PERSON:** With United Methodist Reporter, national newspaper with 500,000 circulation, for ethnic/racial minority person. College training, experience in journalism and Christian commitment with interest in religious journalism career. Internship begins July 1. Salary: \$220 weekly. For application write Internship, The United Methodist Reporter, P.O. Box 221076, Dallas, TX 75222.

5. **INTERNAL AUDITOR, UNITED METHODIST PUBLISHING HOUSE:** Degree in accounting and at least one year of public practice needed for job; responsible for internal audits of divisions of the publishing house. Salary commensurate with experience. Contact Employment Office, 201 Eighth Ave., South, Nashville, TN 37202.

ON THE CALENDAR

May 2-4 **MINISTRY AND THE EMPOWERMENT OF WOMEN.** Examining the power structures of the churches, tradition as a promoter of dependent roles, how women can empower themselves and others. Program, room and meals \$55. Grailville, Loveland, OH 45140. (513) 683-2340.

May 2-4 **NATIONAL CONVOCATION OF THE LUTHERAN WOMEN'S CAUCUS.** Theme: "Whole Women Together" Minneapolis, MN.

May 14-16 **RELIGIOUS COMMUNICATIONS CONGRESS.** For all professionals in religious journalism wanting to examine the role of religious communications in the 1980s. Nashville, TN. Fee: \$75. Contact Wilmer C. Fields, Coordinator, RCC '80, Information Central, 460 James Robertson Parkway, Nashville, TN 37219.

May 23-25 **STEERING COMMITTEE MEETING.** General Commission on the Status and Role of Women, UMC. Madison, WI.

June 5-8 **DEVELOPMENTAL TRANSITIONS IN LIVES OF WOMEN & MEN.** Led by Daniel Levinson, author of "Seasons of a Man's Life," Cynthia Hirni and Robert Raines. Cost: \$275. KirkrIDGE, Bangor, PA 18013

June 8-12 **WOMEN SHARING THE WORD.** A preaching workshop for women in ministry. Experimental-learning event limited to 30 participants; each will preach. Brite Divinity School, TCU, Fort Worth, TX. Cost: \$145, includes housing and meals. Write Susan Robinson, Christian Church (Disciples) P.O. Box 1986, Indianapolis, IN 46206.

June 16-20 **THE FORGOTTEN FEMININE IN THE GOSPELS.** Leaders: Sharon Ringe, Prof., Meth. Theo. Sem., Ohio; and Walter Wink. Cost: \$175. KirkrIDGE.

June 21-23 **CAMPUS MINISTRY WOMEN'S CONFERENCE.** Denver, CO. Contact CMW, 802 Monroe, Ann Arbor, MI 48104.

June 25-28 **WOMEN AND THE MINISTRY OF RECONCILIATION.** Fourth National Conference of the Evangelical Women's Caucus. Cost: \$35. Saratoga Springs, NY. Contact Elaine Stone, 867 Myrtle Ave., Albany, NY 12208.

June 26-29 **CLAIMING OUR POWER AND MOVING WITH IT.** An ecumenical assembly sponsored by Church Women United. University of Southern California, LA. Contact Assembly Business Office, CWU, 475 Riverside Drive, Rm. 812, New York, NY 10027.



the commission on the status and role of women
the united methodist church

1200 davis street
evanston, illinois 60201
(312) 869-7330

Committed to Christ-
Called to Change